

THE ORIGINAL 25x21 NANORAIL[®] RANGE

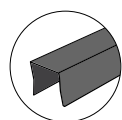
2900MM HANDRAIL

CODE: STG-R2900-2521

LENGTH 2900MM

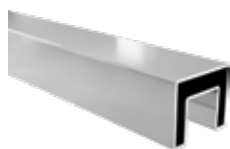
25x21MM PROFILE

SS316L



Use with PVC NANORAIL glazing rubber 2900mm L
STG-NANO-GR

POLISH



SATIN



MATT BLACK

NOT AVAILABLE

MATT WHITE

NOT AVAILABLE

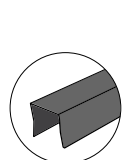
5800MM HANDRAIL

CODE: STG-R5800-2521

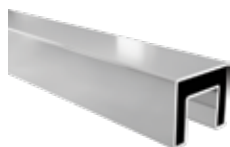
LENGTH 5800MM

25x21MM PROFILE

SS316L



Use with PVC NANORAIL glazing rubber 2900mm L
STG-NANO-GR

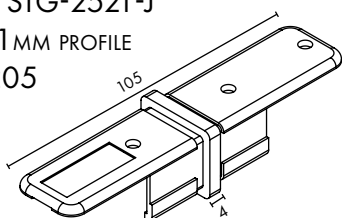


JOINER

CODE: STG-2521-J

25x21MM PROFILE

SS2205

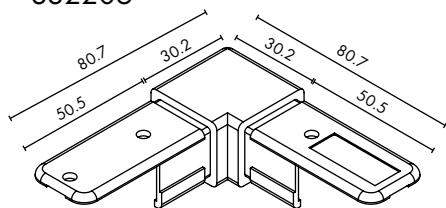


90° JOINER

CODE: STG-2521-90J

25x21MM PROFILE

SS2205

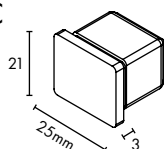


END CAP

CODE: STG-2521-EC

25x21MM PROFILE

SS2205



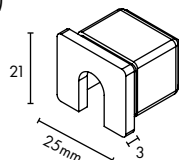
SLOTTED END CAP

CODE: STG-2521-SC

25x21 MM PROFILE

SS2205

(INCLUDES 55MM LONG
SS304 M6 SCREW)



POLISH



SATIN



MATT BLACK

NOT AVAILABLE

MATT WHITE

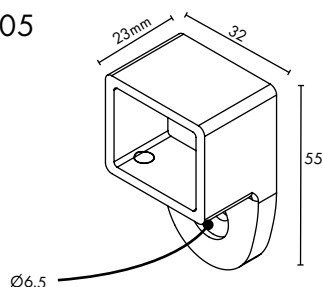
NOT AVAILABLE

WALL PLATE

CODE: STG-2521-WP

25x21 MM PROFILE

SS2205

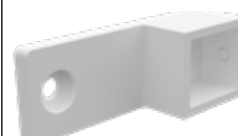
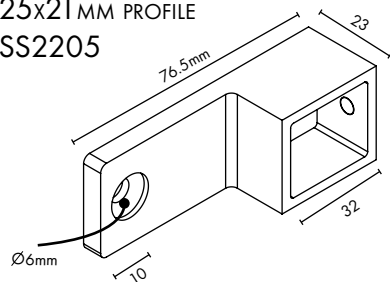


EXTENDED WALL PLATE

CODE: STG-2521-WPEXT

25x21 MM PROFILE

SS2205

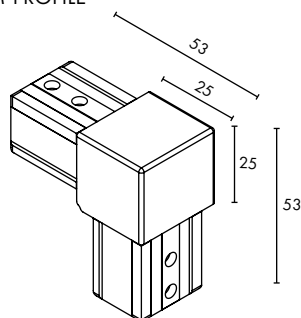


VERTICAL JOINER

CODE: STG-2521-VERTJ

25x21 MM PROFILE

SS2205



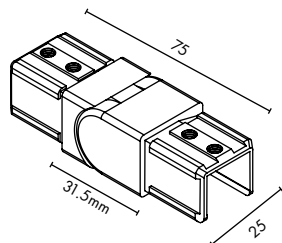
NOT AVAILABLE

VERTICAL ADJUSTABLE JOINER

CODE: STG-2521-VJA

25x21 MM PROFILE

SS2205



POLISH



SATIN



MATT BLACK



MATT WHITE

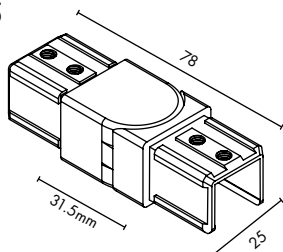


HORIZONTAL ADJUSTABLE JOINER

CODE: STG-2521-HJA

25x21 MM PROFILE

SS2205



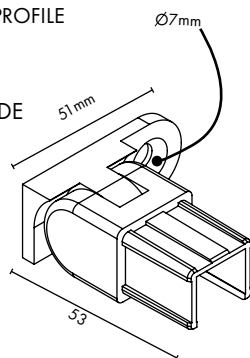
**WALL PLATE VERTICAL
ADJUSTABLE JOINER - RIGHT**

CODE: STG-2521-WP-VA-R

25x21 MM PROFILE

SS2205

WALL FIXING
ON RIGHT SIDE



NOT AVAILABLE

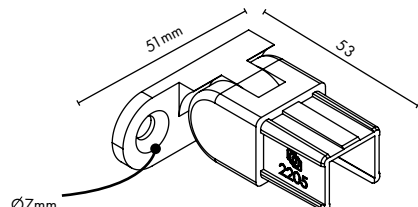
**WALL PLATE VERTICAL
ADJUSTABLE JOINER - LEFT**

CODE: STG-2521-WP-VA-L

25x21 MM PROFILE

SS2205

WALL FIXING ON LEFT SIDE



NOT AVAILABLE

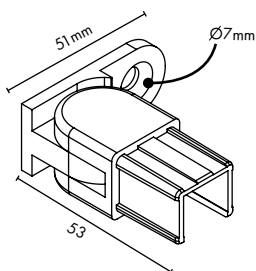
**WALL PLATE HORIZONTAL
ADJUSTABLE JOINER - RIGHT**

CODE: STG-2521-WP-HA-R

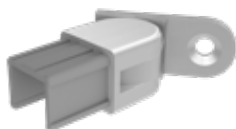
25x21 MM PROFILE

SS2205

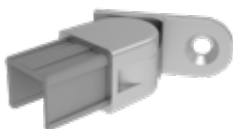
WALL FIXING ON RIGHT SIDE



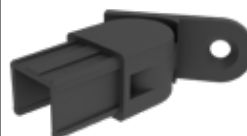
POLISH



SATIN



MATT BLACK



MATT WHITE

NOT AVAILABLE

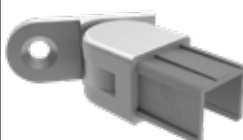
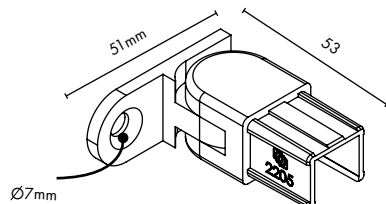
**WALL PLATE HORIZONTAL
ADJUSTABLE JOINER - LEFT**

CODE: STG-2521-WP-HA-L

25x21 MM PROFILE

SS2205

WALL FIXING ON LEFT SIDE



NOT AVAILABLE

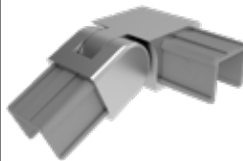
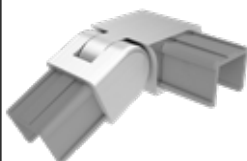
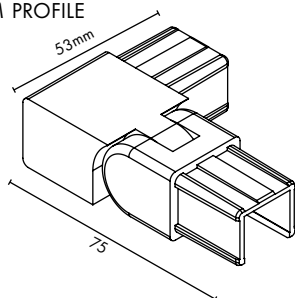
**90° VERTICAL ADJUSTABLE
JOINER - RIGHT**

CODE:

STG-2521-90-VA-R

25x21 MM PROFILE

SS2205



NOT AVAILABLE

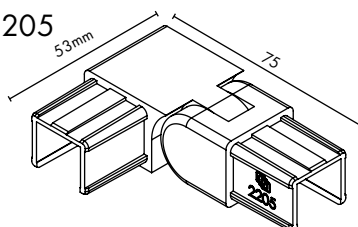
**90° VERTICAL ADJUSTABLE
JOINER - LEFT**

CODE:

STG-2521-90-VA-L

25x21 MM PROFILE

SS2205



NOT AVAILABLE

PARTS



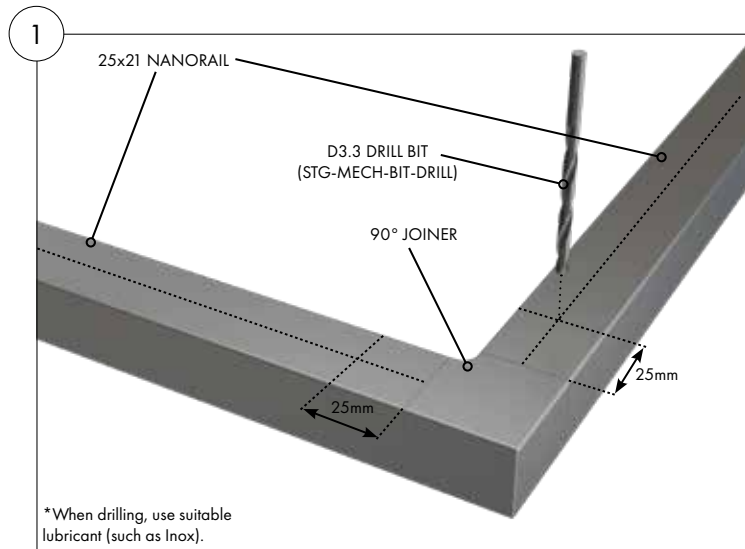
STG-MECH-BIT-CSK



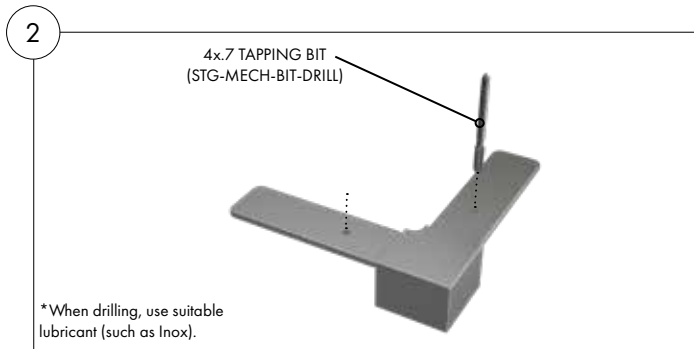
STG-MECH-BIT-DRILL



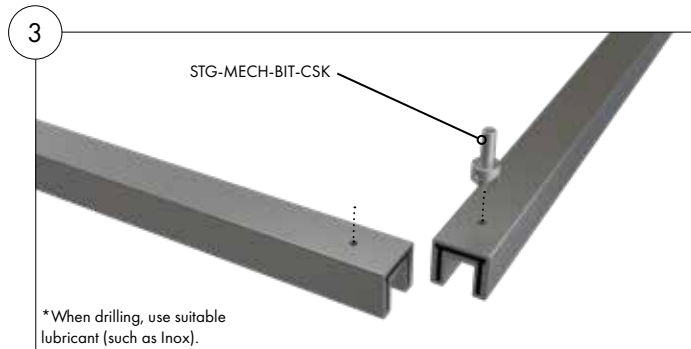
STG-MECH-SCREW-20PK
SS316 M4 x 5mm countersunk screw



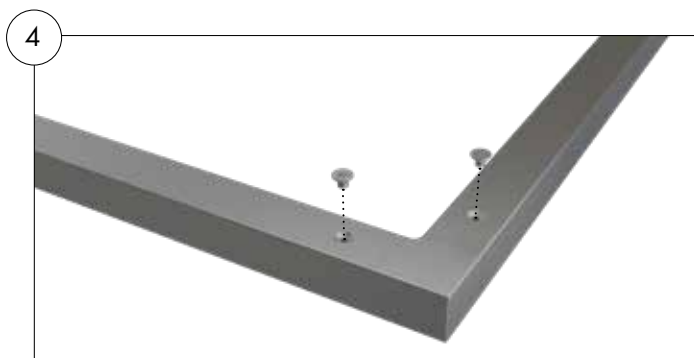
Place handrail on glass and mark holes in the centre of the handrails, 25mm from the handrail edge where it meets the 90° joiner. Remove handrail from glass and position on a stable, padded surface. Whilst on stable, padded surface, using D3.3 DRILL BIT (STG-MECH-BIT-DRILL), drill holes through both handrail and 90° joiner.



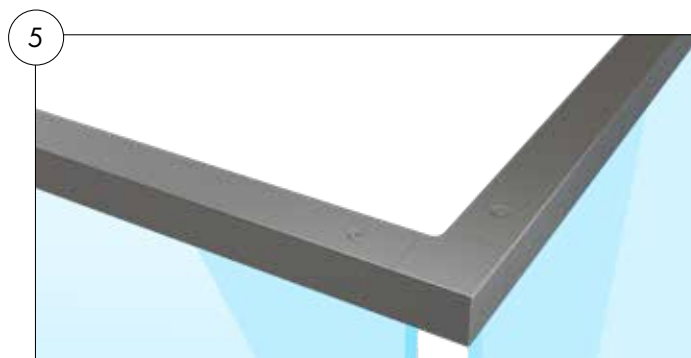
Separate 90 degree joiner from handrail. Using STG-MECH-BIT-DRILL tapping bit, tap thread into the 2 x holes in the 90 degree joiner.



With handrail and 90 degree joiner still separated, use STG-MECH-BIT-CSK and countersink 2 x top holes in handrail.



Insert 90 degree joiner into handrail. Affix 2x STG-MECH-SCREW per corner to fasten handrails to 90° joiner. Can be completed on installed glass or on stable, padded surface.



Re-position handrail on glass.

NOTE: Same principle applies for inline joiner installation.