

# ALUMINIUM BALUSTRADE SYSTEMS

AIRE, PREMIUM PERF & HORIZONTAL SLAT BALUSTRADE

Glass Outlet's suite of aluminium systems sit at the intersection of style and innovation. Designed with labour saving technology in mind and non-weld assembly/installation, simply select post and handrail and then select between 4 infill styles.



Four stylish infill designs to choose from



Save time & money without compromising quality or style



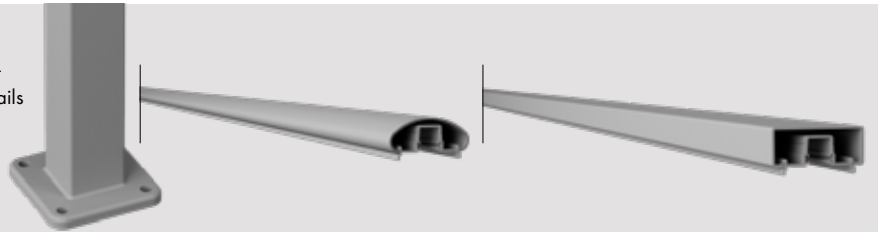
Non-weld assembly and easy installation



Engineering certification approved for balustrading

## 01 STEP 1 / SELECT POST & HANDRAIL

Core drill or base plate posts / oval or rectangular handrails



## 02 STEP 2 / SELECT INFILL

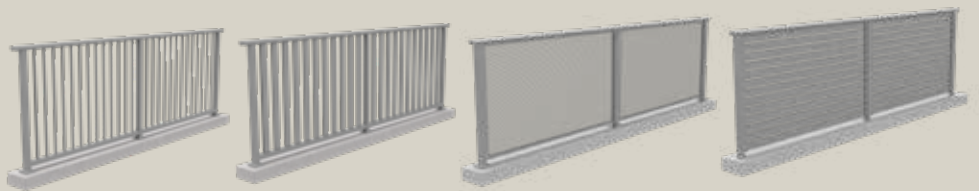
(same post & handrails used with all infills)

(A) Square picket baluster (16.5x16.5mm)

(B) Vertical slat balustrade (65x16.5mm)

(C) Premium perforated sheet

(D) Horizontal slat balustrade (65x16.5mm)



## 03 STEP 3 / INSTALL

Enjoy the benefits of non-weld assembly with a superb finish.



# AIRE BALUSTRADE

## Why choose AIRE?

AIRE is a complete aluminium picket balustrade system featuring innovative patented non-weld technology and is ideally suited for new builds or renovations. This stunning system features either vertical 16.5mm square or 65x16.5mm slat balusters coupled with sturdy 50x50mm posts and the option of either a rectangular or oval handrail.

Careful design considerations ensure the system seamlessly integrates providing a complete aluminium balustrade suite that is easy to assemble and install in either core drill or base plated application.

The system is stocked in 3 popular powder coated finishes – satin black, monument matt and pearl white gloss. It is also available in mill finish allowing customisation of powder coat colour. Pre-powder coated material can be cut to required lengths and assembled onsite or in a factory. The installation process has been carefully considered with component parts designed to maximise visual appeal while still ensuring ease of install.

The AIRE system is the result of significant research and development coupled with extensive load testing by accredited NATA testing facilities. Importantly, engineer compliance certification is available.

## FINISHES



### 01 AIRE Picket Full

The ultimate in picket balustrade – featuring 16.5x16.5mm square balusters with oval or rectangular handrail option.



### 02 AIRE Picket 3-Rail

Features a stylish midrail design incorporating 16.5x16.5mm square balusters and choice of oval or rectangular handrail.



### 03 AIRE Slat Full

Vertical slat 65x16.5mm slat balusters with 64mm gap spacing. Increasingly popular having regard to Hamptons inspired design.



### 04 AIRE Slat 3-Rail

Midrail option for 65x16.5mm vertical slat balustrade.



# PREMIUM PERF BALUSTRADE

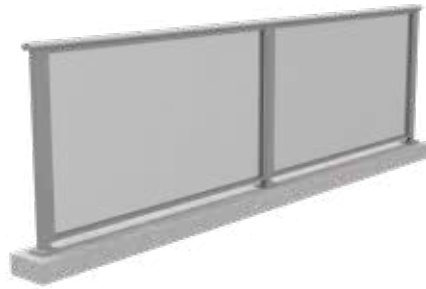
## Why choose Premium Perf Balustrade?

PREMIUM PERF is a complete balustrade system featuring the growing trend for aluminium punched perforated infill panels.

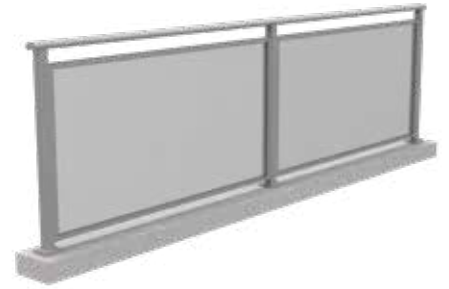
As an alternative to glass, a number of key features make perforated aluminium an ideal selection including:

- ✓ shatterproof
- ✓ low maintenance
- ✓ extremely durable and corrosion resistant
- ✓ wind can pass through perforated holes
- ✓ being fully aluminium, application of the new Glass In Buildings Standard (AS1288-2021) is not relevant

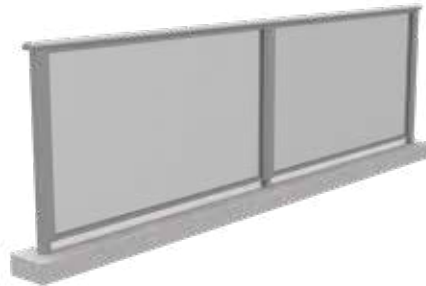
### FINISHES



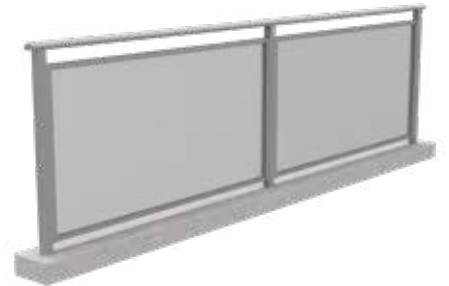
01 **Perf Balustrade**  
Full perf panel with welded base plated posts



02 **Perf Balustrade**  
Perf with visibility gap and welded base plated posts



03 **Perf Balustrade**  
Full perf panel with core drilled posts



04 **Perf Balustrade**  
Perf with visibility gap and core drilled posts





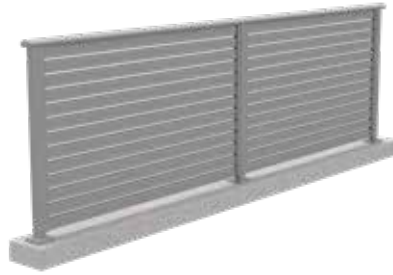
# HORIZONTAL SLAT BALUSTRADE

## Why choose horizontal slat balustrade?

AIRE Horizontal Slat Balustrade is a complete non-weld system which perfectly typifies the saying 'simplicity is the ultimate form of sophistication'. With sleek lines and innovative design consideration ensuring screw fixings are hidden, the system is easy to install and yet provides for a stunning finish.

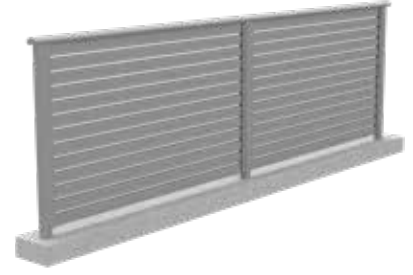
The system is stocked in 3 popular powder coat finishes – satin black, monument matt and pearl white glass. It is also available in mill finish allowing customisation of powder coat colour. Pre-powder coated material can be cut to required lengths and assembled onsite. The installation process is simple and effective – side frames are affixed to the sturdy aluminium posts and horizontal slats are screw fixed either side with a fixing cover hiding screws.

The system has been extensively load tested by accredited NATA testing facilities. Importantly, engineering compliance certification is available.



### 01 Horizontal Slat Balustrade

Horizontal slat balustrade with 9mm spacing with welded base plated posts



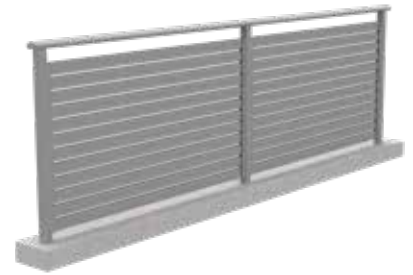
### 02 Horizontal Slat Balustrade

Horizontal slat balustrade with 9mm spacing with core drill posts



### 03 Horizontal Slat Balustrade

Horizontal slat balustrade with 9mm spacing with visibility gap and welded base plated posts



### 04 Horizontal Slat Balustrade

Horizontal slat balustrade with 9mm spacing with visibility gap and core drill posts

#### FINISHES

